

Smart City Citizens

-Resilience of medium sized cities during global environmental change and the digital revolution



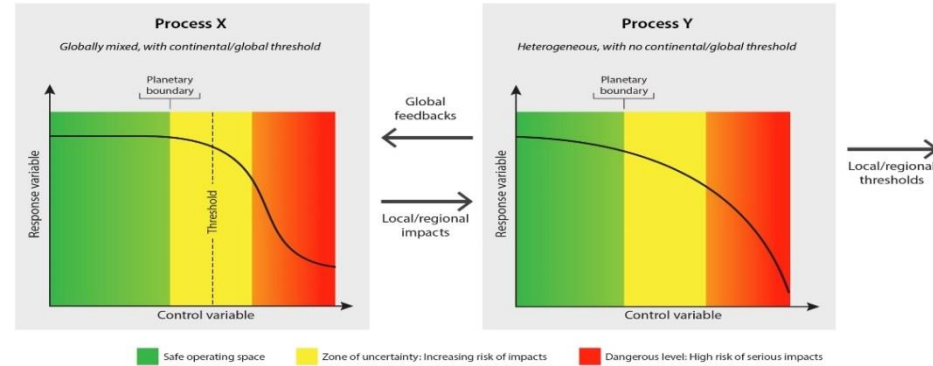
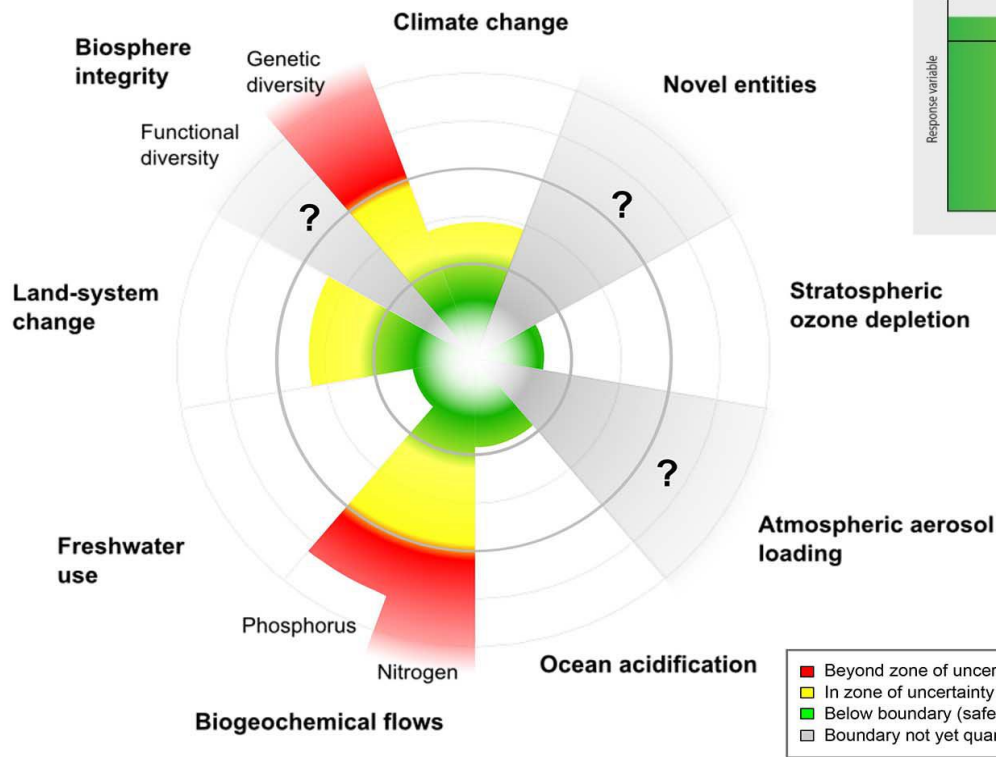
Associate Professor Stephan Barthel, University of Gävle, Sweden
(<https://hig.se/urbanstudio>)



REGIONS
& CITIES

European Week
Brussels 7-10 October 2019

Shifting Planetary Boundaries – Time ripe for adaptation

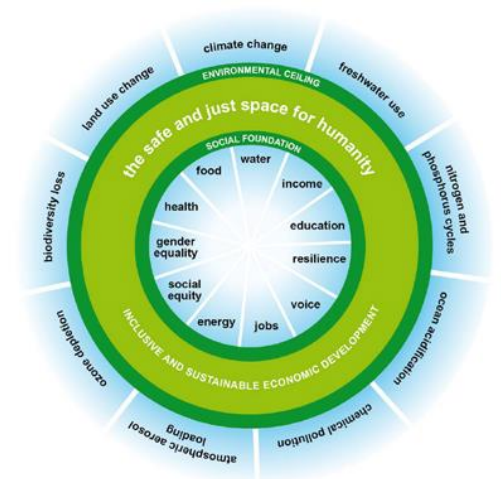


- Beyond zone of uncertainty (high risk)
- In zone of uncertainty (increasing risk)
- Below boundary (safe)
- Boundary not yet quantified



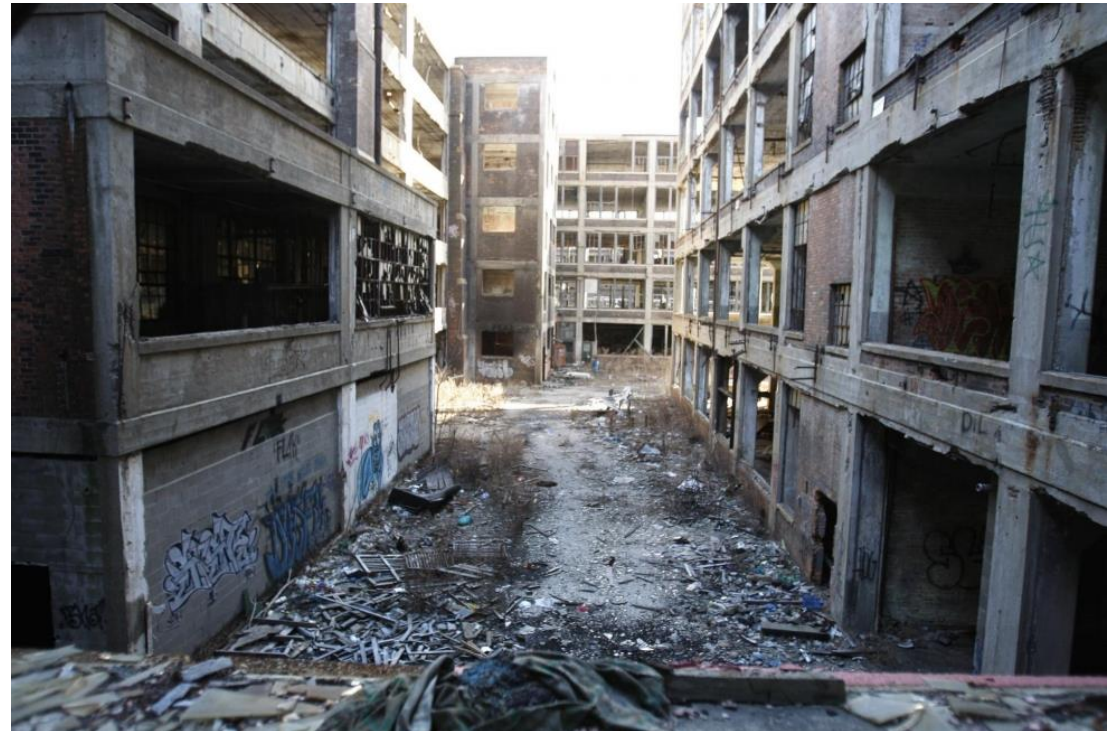
REGIONS
& CITIES

European Week
Brussels 7-10 October 2019



Urban Resilience

-The buffer capacity to absorb disturbance and continue develop



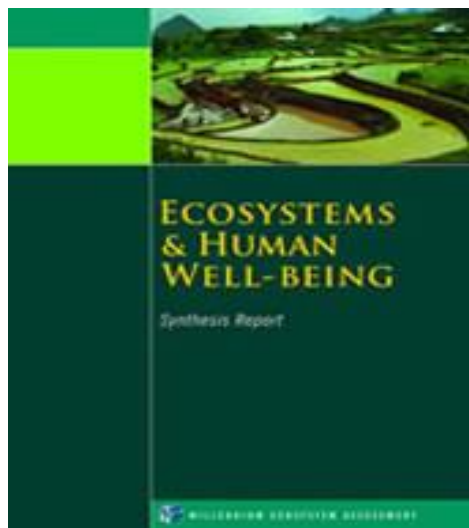


REGIONS
& CITIES

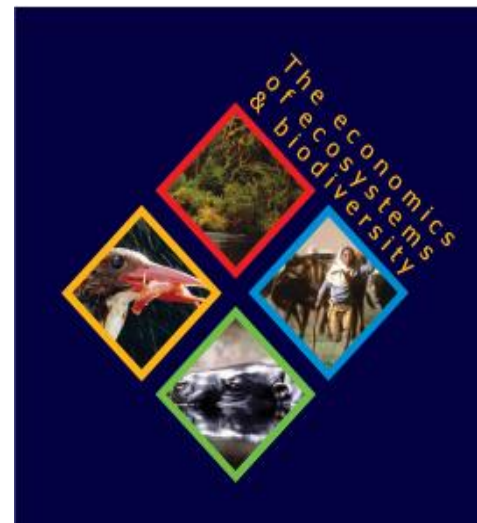
European Week
Brussels 7-10 October 2019

Urban Nature and Climate Resilience

-Ecosystem services



Grönområden bidrar till att rena luft och sänka temperaturen i staden.





REGIONS
& CITIES

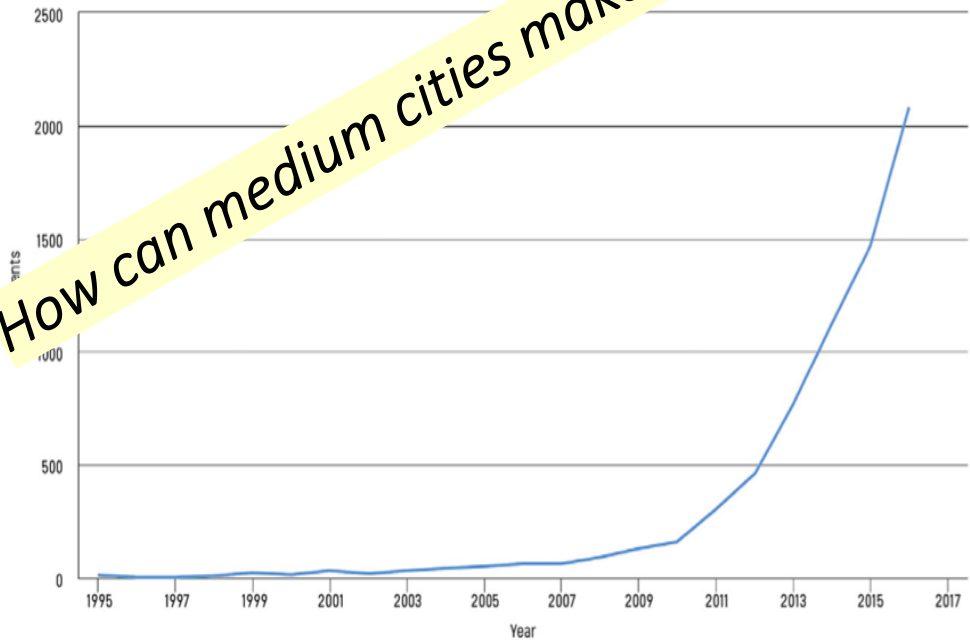
European Week
Brussels 7-10 October 2019

The Smart (digital) City Model

- c. 8000 scientific publications by 2018



How can medium cities make sense of it?



over the development of publications on "smart city"/"smart cities" as provided from the Scopus database. Source: modified from Scopus

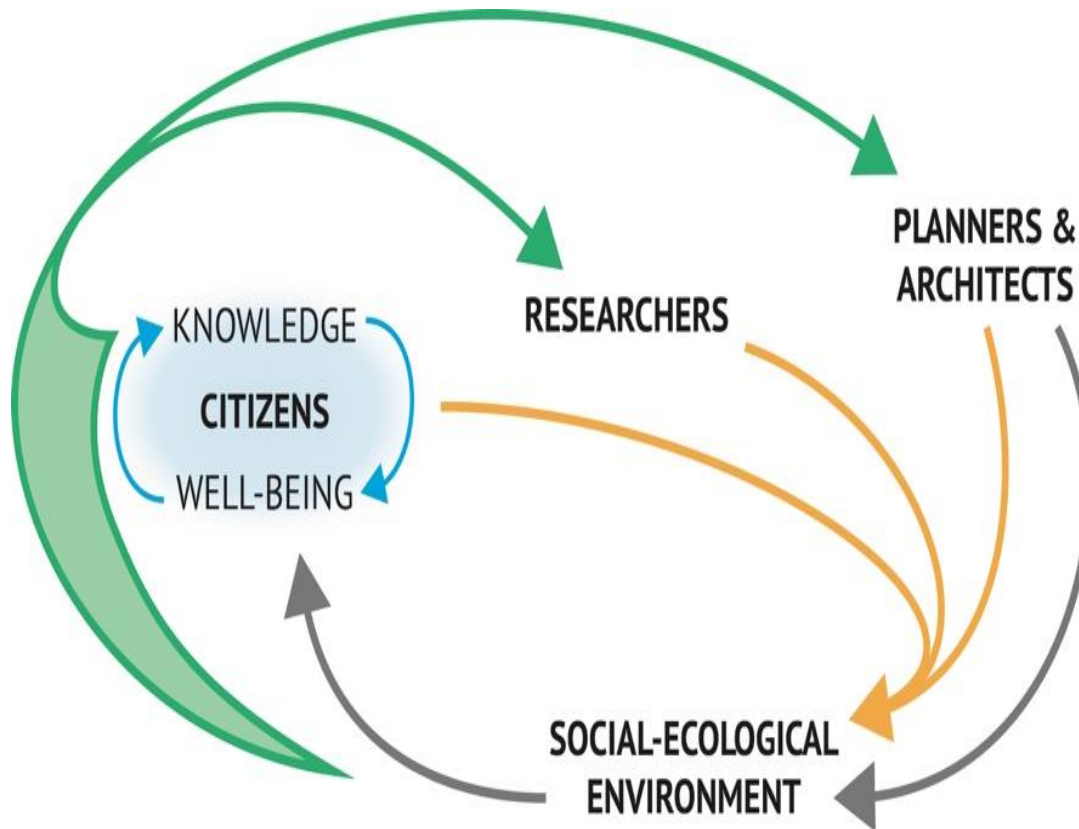


**REGIONS
& CITIES**

**European Week
Brussels 7-10 October 2019**

Civic participation in design

-Can digital tools be used to foster urban resilience?



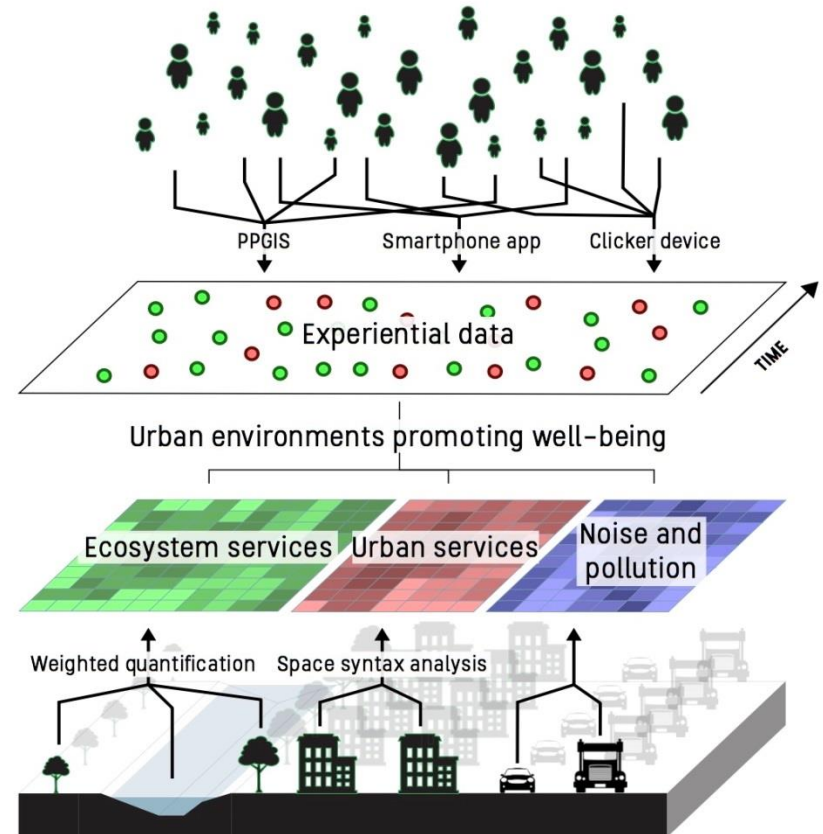


REGIONS
& CITIES

European Week
Brussels 7-10 October 2019

Navigating the Smart City Tsunami

-Innovation in digital methods for improving health



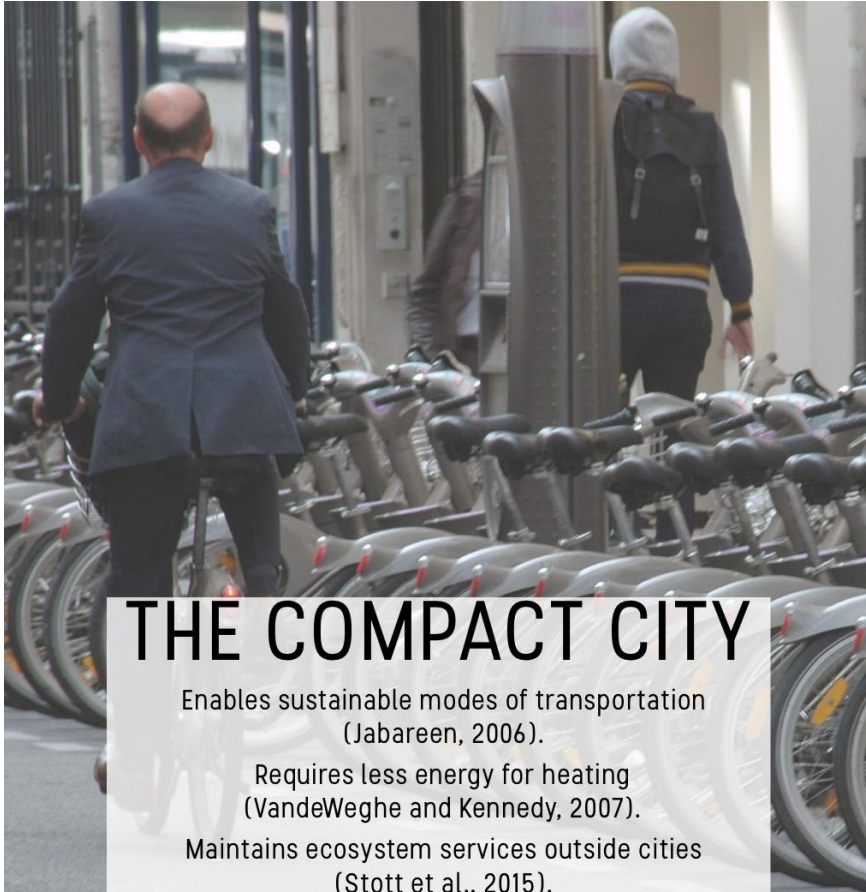


**REGIONS
& CITIES**

European Week
Brussels 7-10 October 2019

Conflicting Spatial Paradigm

-experiential knowledge may bridge the divide

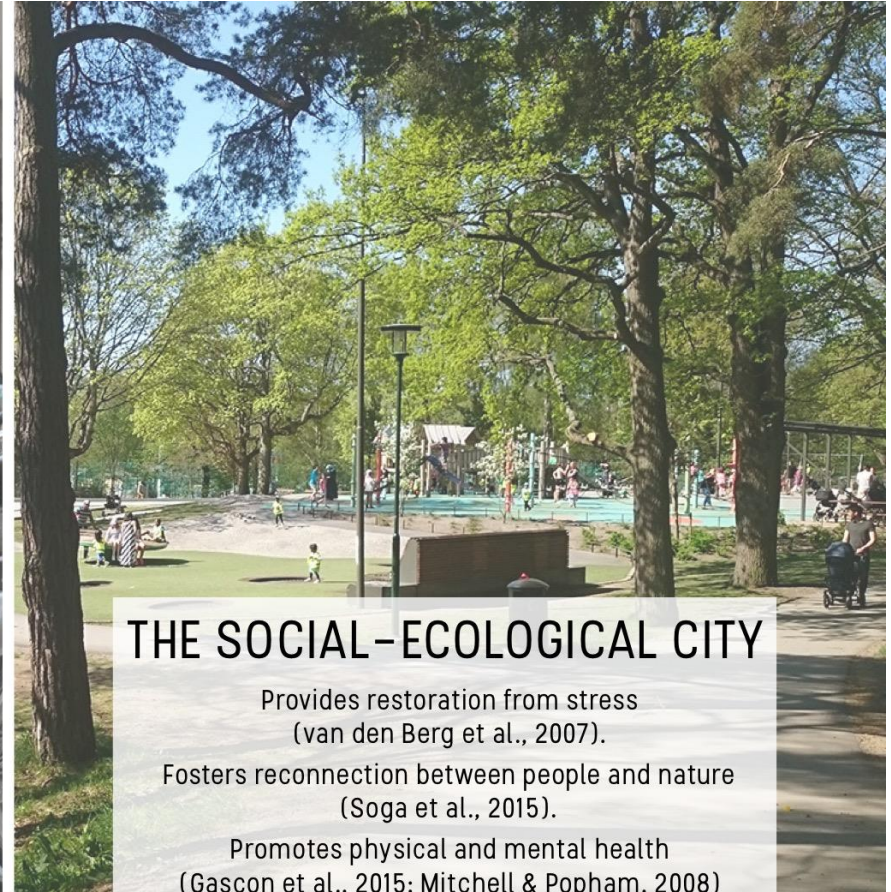


THE COMPACT CITY

Enables sustainable modes of transportation
(Jabareen, 2006).

Requires less energy for heating
(VandeWeghe and Kennedy, 2007).

Maintains ecosystem services outside cities
(Stott et al., 2015).



THE SOCIAL-ECOLOGICAL CITY

Provides restoration from stress
(van den Berg et al., 2007).

Fosters reconnection between people and nature
(Soga et al., 2015).

Promotes physical and mental health
(Gascon et al., 2015; Mitchell & Popham, 2008)



REGIONS
& CITIES

European Week
Brussels 7-10 October 2019

Landscape and Urban Planning 171 (2018) 7–17



ELSEVIER

Contents lists available at ScienceDirect

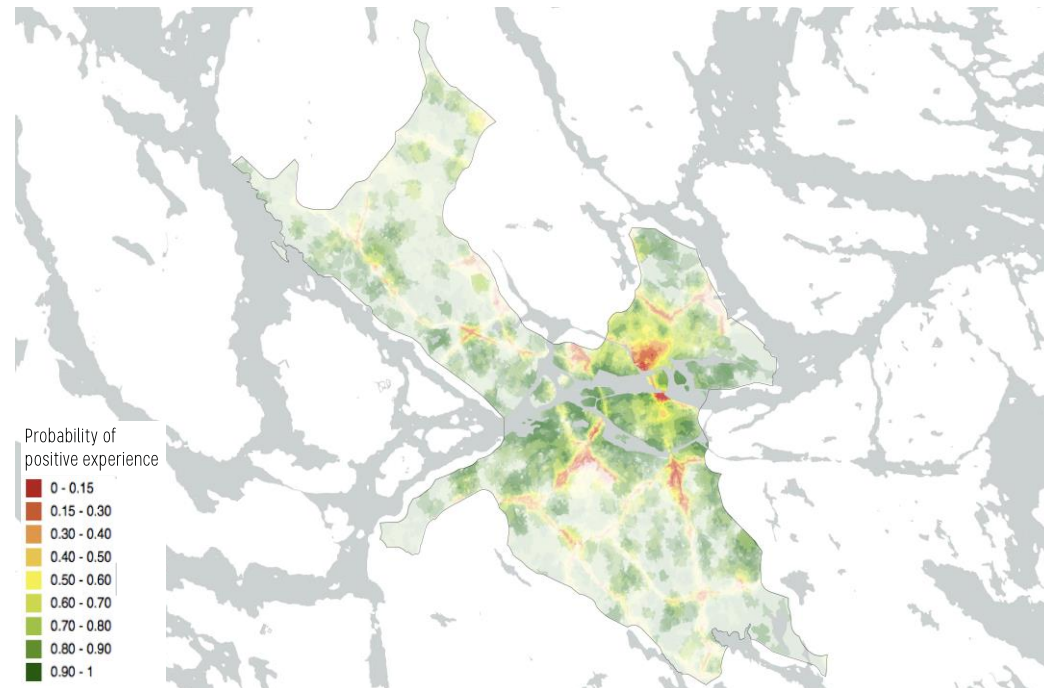
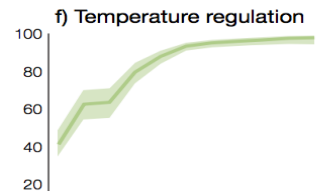
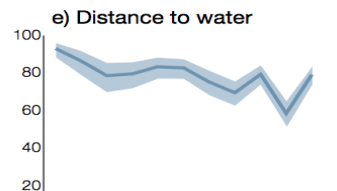
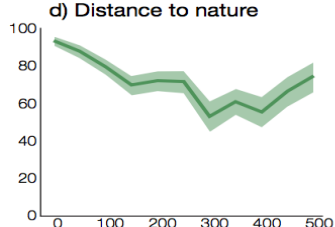
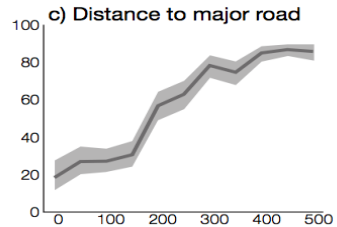
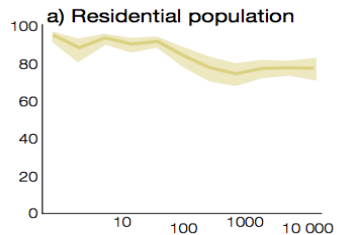
Landscape and Urban Planning

journal homepage: www.elsevier.com/locate/landurbplan

Research Paper

Impact of environment on people's everyday experiences in Stockholm

Karl Samuelsson^{a,*}, Matteo Giusti^b, Garry D. Peterson^b, Ann Legeby^c, S. Anders Brandt^a,
Stephan Barthel^{a,b}





**REGIONS
& CITIES**

European Week
Brussels 7-10 October 2019

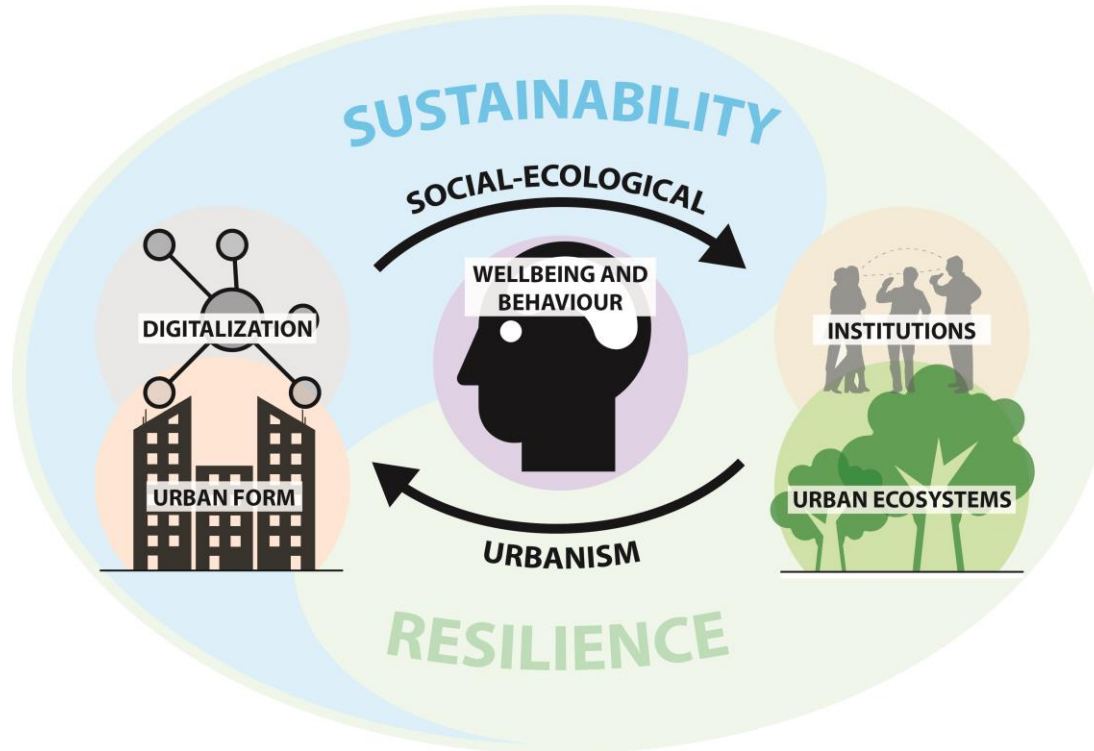
Resilient City-Scapes centered on Human Wellbeing -Advantage of medium sized cities

- Healthcare costs are spiralling upwards
 - 95% of healthcare costs are in treating disease
 - Only 5% are in preventative healthcare!
 - Can we design for long term positive impact of social-ecological landscape on wellbeing?



**REGIONS
& CITIES**

European Week
Brussels 7-10 October 2019



<https://hig.se/urbanstudio>

Thanks!